

RTI SLSC Modular System

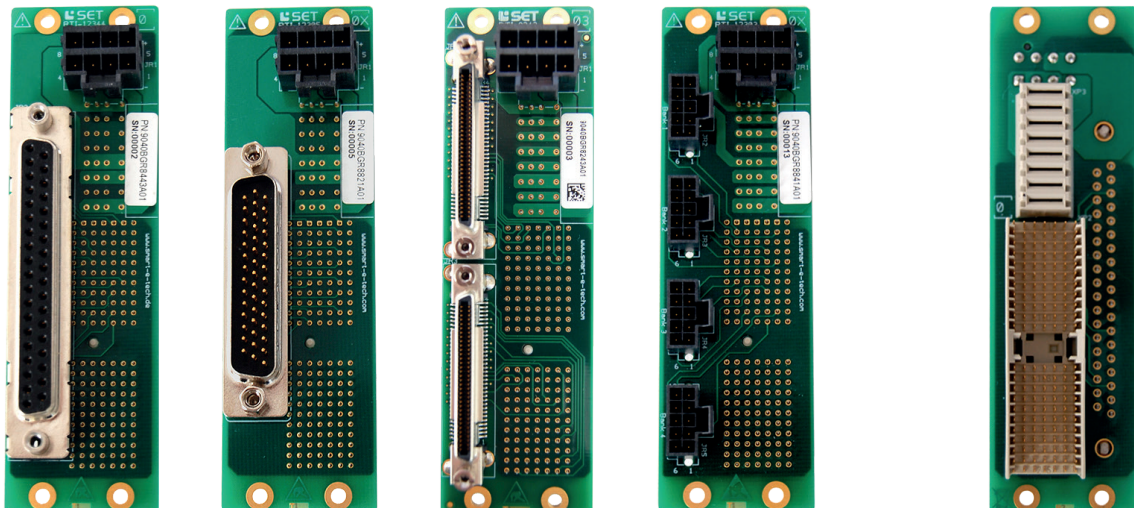
OVERVIEW



Signal Transfer - Tailored to your needs

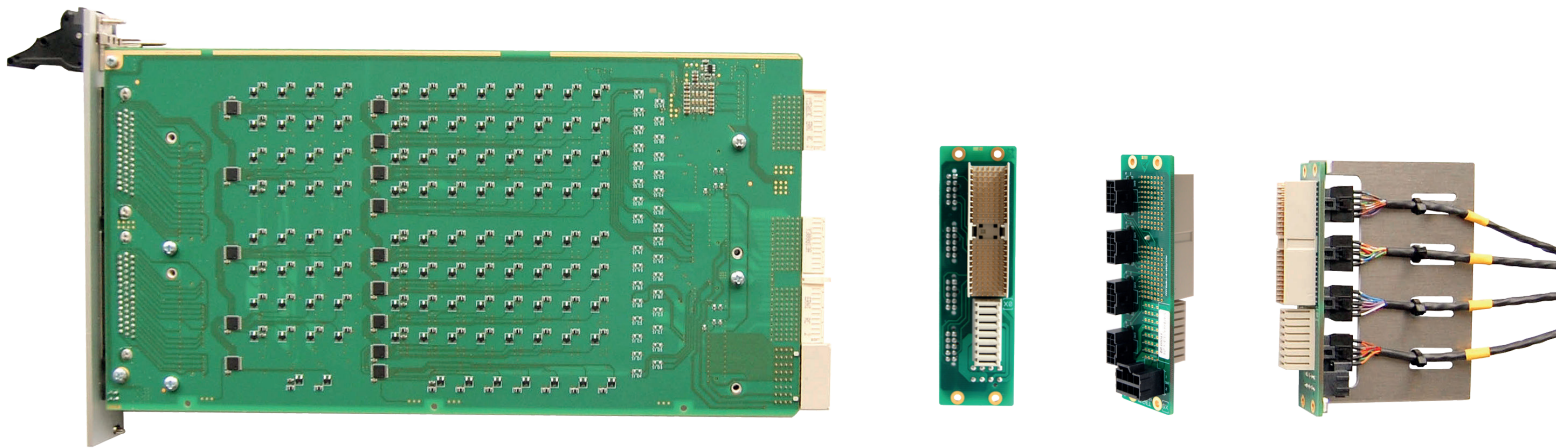
At the back of a SLSC chassis, screw mounted Rear Transition Interfaces (RTIs) contact the signal connector of the SLSC card and transfer the signals to several hardware of National Instruments. At the back of the RTI are in turn other plugs for the transmission of the signals.

The SET GmbH is continuously working on the development of new RTIs. If you do not find the appropriate RTI for your application, we will be glad to help you, from the delivery of a particular cable to the development of a user-specific RTI.



RTI Modules

The RTI modules can either be used to contact the SLSC card directly with common NI standard components of the PXI or cRIO platform or for the division of the signals to standard plug connectors suitable for industrial use. In the former case, the corresponding hardware can be connected with a one-to-one cable, whereas in the second case, the NI hardware or hardware from another manufacturer can be connected with adapter cables. If a NI hardware requires multiple signal conditioning, such a RTI can be used together with a y-cable.



RTI - 12302	RTI to connect 64 Channels from a level 1 compliance DIO SLSC Card to two PXI card VHD-CI-68 DIO connector e.g. PXIe-7846R
RTI - 12303	RTI to connect 16/32 Channels from any level 1 compliance SLSC card to four NanoFit connectors cables
RTI - 12304	RTI to connect 32 Channels from a level 1 compliance DIO SLSC Card to one cRIO Module e.g. NI9403
RTI - 12305	RTI to connect 16/32 Channels from any level 1 compliance SLSC card to one SLSC card HD44 front connector
RTI - 12344	RTI to connect 16 Channels from a level 1 compliance AI/AO SLSC card to one cRIO Module e.g. NI9264/NI9220



SET GmbH

August-Braun-Straße 1
D-88239 Wangen/Allgäu

T +49 75 22 916 87 - 600
F +49 75 22 916 87 - 899

info@smart-e-tech.de
www.smart-e-tech.de

